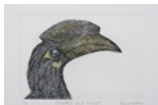


ARTWORKS  
AND ARTISTS'  
BIOGRAPHY

# ARTWORKS AND ARTISTS' BIOGRAPHY

## Alison Wilson (b.1963, United Kingdom)

Alison is a printmaker and textile artist whose works reflect her deep interest in botany, birds, and the beach. Her art practice uses traditional printing and textile techniques, particularly etching and blind embossing. In 2010, she was awarded 1st Prize for 'Ocean Artist of the Year', Voice of the Ocean Competition at ADEX.



6  
*Oriental Pied Hornbill*  
2014  
Etching and hand  
colouring (ed 1/10)  
445 x 395 mm  
Collection of  
NTU Museum



8  
*Common Flameback*  
2014  
Etching and hand  
colouring (ed 1/10)  
445 x 395 mm  
Collection of  
NTU Museum



9  
*Koel*  
2014  
Etching and hand  
colouring (ed 2/10)  
445 x 395 mm  
Collection of  
NTU Museum



25  
*Laughing Thrush*  
2014  
Etching aquatint and  
hand colouring (ed 1/10)  
445 x 395 mm  
Collection of  
NTU Museum



26  
*White Collared Kingfisher*  
2014  
Etching and hand  
colouring (ed 1/10)  
445 x 395 mm  
Collection of  
NTU Museum



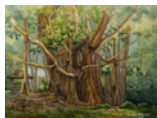
27  
*Racket-tailed drongo*  
2014  
Etching and hand  
colouring (ed 2/10)  
445 x 395 mm  
Collection of  
NTU Museum

## Allan Chan Pow Kieng (b.1943, Singapore)

Chan is self-taught and driven by his passion; he started sketching and painting with watercolour in the late 1980s. His decades of full-time employment in the creative and art industry gave him a unique style, that was realistic and orderly composed. Setting the mood of thoughtful serenity that captures and explores the subtle calm of urban life and the tranquil nature of Singapore.



4  
*Enchanting Mood  
at Botanic Gardens*  
2005  
Watercolour  
750 x 620 mm  
Collection of  
NTU Museum



5  
*Banyan Tree*  
2010  
Watercolour  
775 x 645 mm  
Collection of  
NTU Museum



12  
*Top of Fort Canning Park*  
2003  
Watercolour  
600 x 490 mm  
Collection of  
NTU Museum



13  
*Fort Canning Park*  
2002  
Watercolour  
775 x 645 mm  
Collection of  
NTU Museum



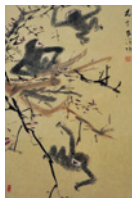
29  
*Singapore River*  
2013  
Watercolour  
720 x 570 mm  
Collection of  
NTU Museum



32  
*The Pond at  
Botanical Garden*  
2010  
Watercolour  
655 x 540 mm  
Collection of NTU Museum

## Chen Wen Hsi (b. 1906, China; d. 1991, Singapore)

Chen was one of Singapore's pioneer artists and a key figure in Singapore's Nanyang art movement. He trained at Shanghai College of the Arts under renowned Chinese artist Pan Tianshou. As a Chinese ink painter and educator, Chen was at the forefront of the Chinese avant-garde movement, combining Western art with Chinese brush strokes in his painting.



17  
*Gibbons*  
Year unknown  
Colour and ink on paper  
1160 x 680 mm  
Collection of NIE  
Inscription:文希南洋作

## Chong Fah Cheong (b. 1946, Singapore)

Chong is a sculptor and Cultural Medallion recipient (2014), who works with wood, stone and bronze. His sculptures are whimsical and could be appreciated by all, often commenting on society and social issues. His famous public sculptures could be seen around Singapore capturing the essence of carefree childhood days and his exploration of Singapore's heritage. Chong continues to hone his skills and mentor young and new artists.



2  
*Kampong Kids*  
c. 1999  
Bronze sculpture  
320 x 230 x 470 mm  
Collection of NIE

## Chua Ek Kay (b. 1947, China; d. 2008, Singapore)

Chua is respected for his distinctive blend of Eastern and Western aesthetics, fusing traditional Chinese ink painting and calligraphy elements with western theories and techniques. He trained under ink master Fang Chang Tien of the Shanghai School. Chua was the first Chinese Ink painter to win the United Overseas Bank Painting of the Year in 1991 and received the Cultural Medallion Award in 1999.



33  
*Awaiting a Dragonfly*  
2002  
1230 x 960 mm  
Print (ed 16/30)  
Collection of NIE

## Dominic Fondé FGE (b. 1974, United Kingdom)

Fondé is a professional glass artist and curator, who relocated to Singapore in 2006-2014. His artistic practice dwells on the technique of drill engraving, he then combines his passion for art and storytelling in his work, where he began to inscribe stories onto glass objects, he take a special interest in text and drawings, especially images of birds and feathers.



7  
*Sparrow*  
2013  
Biro on watercolour paper  
490 x 415 mm  
Collection of  
NTU Museum



22  
*Wren*  
2014  
Biro on watercolour paper  
550 x 623 mm  
Collection of  
NTU Museum



23  
*Oriental White-Eye*  
2014  
Biro on watercolour paper  
550 x 623 mm  
Collection of  
NTU Museum

## Helen Playford (b. unknown, Australia)

An artist who is inspired by the pages of history. Helen has had many solo exhibitions, and is represented in Singapore, at the Australian High Commission, and the Singapore Cricket Club.



40  
*1925 Cavenagh Bridge*  
Singapore  
1993  
Print, oil pastel print  
(ed 2/20)  
780 x 622 mm  
Collection of NIE

## Han Sai Por (b. 1943, Singapore)

Han, a Singaporean sculptor and Cultural Medallion recipient (1995), is best known for her stone sculptures. Han's choice of materials is primarily governed by the purpose for which the work is made; specifically, the choice is determined by the symbolic reason or solutions. Her body of work often brings attention to scant regarded heritage, flora and fauna, making significant comments about the changing landscape often; in relation to Singapore.



21  
*Leaves from Enclosing Space*  
2003  
Charcoal on paper  
1800 x 1490 x 60 mm  
Collection of NIE



36  
*Brain Tree*  
2016  
Felled trees  
(Albezia saman)  
540 x 560 x 980 mm  
Collection of  
NTU Museum



37  
*Discovery (Bones/Joints)*  
2016  
Felled trees (Acacia sp)  
500 x 470 x 1380 mm  
Collection of  
NTU Museum



38  
*Organism*  
2016  
Felled trees (Acacia sp)  
400 x 490 x 1250 mm  
Collection of  
NTU Museum

## Dr. Iskandar Jalil (b. 1940, Singapore)

Dr. Iskandar is an eminent local ceramist. Awarded the Cultural Medallion (1988) and numerous cultural accolades. His works integrate Japanese and Islamic styles and are characterised as simple but robust, with richly textured surfaces. His signature blue glaze known as the 'Iskandar blue', the use of twigs as embellishments and Southeast Asian motifs and Jawi calligraphy could often be seen in his works.



14  
*Slab Work*  
2015  
Stoneware  
525 x 120 x 275 mm  
Collection of NIE



### Juneo Lee Eng Keong (b. 1966)

Lee is an artist and educator, that takes an interest in issues of post-colonial identity and creates visual representations that respond to and articulate/translate one inner thoughts, his artworks act as a bridge and the outcome of the artist's inner monologues. Lee was a lecturer at National Institute of Education, Singapore.



35  
*P-modern and the Yellow Coloured Flower*  
2000  
Acrylic on bisque fired ceramic mounted on wood  
1235 x 1210 x 135 mm  
Collection of NIE

### Lim Cheng Hoe (b. 1912, China; d. 1979, Singapore)

Lim was the leading watercolour artist of his generation and master of plein-air (outdoor) paintings, taking great interest in watercolour and the local art scene. He became one of the founders of the Singapore Watercolour Society. Largely self-taught, he studied painting under Richard Walker and is always seeking to hone his skills further, emphasised greatly in accuracy and observation.



28  
*Bumboats*  
1960  
Watercolour  
720 x 600 mm  
Collection of NIE



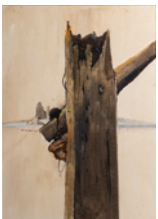
39  
*Kallang River Bank*  
Year unknown  
Watercolor  
820 x 660 mm  
Collection of NIE



44  
*Singapore river*  
1971  
Watercolour  
780 x 660 mm  
Collection of NTU Museum

### Lim Hwee Tiong (b. 1950, Singapore)

Lim, formally training in watercolour painting, graduated from the Nanyang Academy of Fine Arts and is a lifetime member of the Singapore Watercolour Society. Lim received many forms of recognition and awards. His works are collected by the National Museums of Singapore, UOB Art Collection and also in many private collections. During the early 90s, Lim was also commissioned by NTU Singapore to paint the campus landscape.



15  
*Wood*  
1985  
Watercolour  
865 x 1080 mm  
Collection of NTU Museum

### Lim Tze Peng (b. 1921, Singapore)

Lim, a Culture Medallion recipient (2003), is renowned for his Chinese calligraphy and Chinese ink creations that often depict post-independent Singapore. Lim believes it is his mission to document what was left of the old Singapore. His latest abstract calligraphy creation further shows his constant search for new expression as he applied colours to his calligraphy, which is seemingly modern yet holds true to traditional Chinese ink painting.



3  
*Singapore River*  
2008  
Ink and colour on paper  
3840 x 1620 mm  
Collection of NTU Museum

### Lucy Davis (b.1970, United Kingdom)

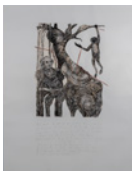
Davis is an artist and writer. Her interdisciplinary practice examines notions of nature in art and visual culture, science and indigenous knowledge, natural histories, materiality and urban memory primarily but not exclusively in Southeast Asia. The Migrant Ecologies Project is the product of her longstanding interest in the mid-twentieth century Singapore Modern Woodcut movement which later informed a six-year long, material-led cumulative series of investigations under the auspices of The Migrant Ecologies Project.



11  
*'In which 'A view of a town from Government Hill' reveals and conceals encounters with residents'*  
2009  
Charcoal, woodprint collage on paper  
1840 x 2290 mm  
Collection of NTU Museum



16  
*'Pokok ranjang jati – teak bed tree'*  
2009  
Woodprint collage on paper  
2540 x 1840 mm  
Collection of NTU Museum



41  
*'In which William Farquhar meets a black handed gibbon'*  
2009  
Charcoal, woodprint collage on paper  
1840 x 2260 mm  
Collection of NTU Museum



42  
*'In which Alfred Russel Wallace encounters an orang utan attacked by Dyaks' (Jacob and Angel)'*  
2009  
Woodprint collage on paper  
2140 x 1840 mm  
Collection of NTU Museum

### Ong Kim Seng (b. 1945, Singapore)

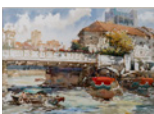
Ong, a self-taught, eminent water-colourist and Cultural Medallion recipient (1990), is the first and only Singaporean and Asian artist outside the USA to be a member of the prestigious 138-year-old American Watercolor Society. Ong's attention to detail and immaculate technique in expressing the contrast between light and shadow is seen in his depiction of local scenes.



10  
*Coleman Bridge*  
Year unknown  
Watercolour  
800 x 630 mm  
Collection of NIE



30  
*Empress Place*  
2003  
Watercolour  
1052 x 852 mm  
Collection of NTU Museum



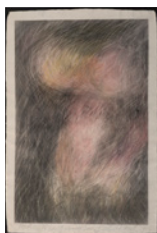
43  
*Clarke Quay*  
2000  
Watercolour  
1000 x 790 mm  
Collection of NTU Museum

### Tang Da Wu (b. 1943, Singapore)

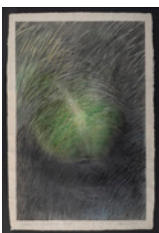
Founder of The Artist Village in 1988, Tang is known for spurring artists to experiment with alternative art-making and approaches. Tang's practices are deeply reflective and constantly engaging, responsive with and to the everyday social-cultural reality, introducing and giving attention to what he sees through his art. In 2007, Tang was one of four artists that represented Singapore at the Venice Biennale. Tang is currently a lecturer at NIE, Singapore.



18  
*Memory of the Sun*  
1996  
Chalk on paper  
850 x 1190 mm  
Collection of NIE



19  
*Jantung Pisang*  
1998  
Chalk on paper  
1950 x 1300 mm  
Collection of NIE



20  
*Under a Banana Leaf*  
2000  
Chalk on paper  
850 x 1190 mm  
Collection of NIE

### Tong Chin Sye (b. 1939, Singapore)

Tong Chin Sye is a 2nd generation Nanyang artist—painter who works with multi-medium. Trained in both Western and Chinese art, his works show a distinct quality that blends the beauty of Chinese calligraphy in his oil and watercolour works. As an avid traveller, he is inspired by architectural and cultural matters, often painting the rapidly changing cityscapes and streets of not just Singapore but various cities.



31  
*General Post Office*  
1980  
Watercolour  
1250 x 905 mm  
Collection of  
NTU Museum

### Wan Soon Kam (b. 1943, Singapore)

Wan is a watercolorist and acrylic painter best known for his tranquil landscapes, rustic kampongs (village), and street scene paintings. Wan often uses diverse painting techniques, combining acrylic and watercolour in his paintings. Influenced by his formal training in commercial art and his experience as an illustrator. He was also awarded by the Ministry of Culture in 1977 for his contribution to the arts.



1  
*Old House at Clarke Quay*  
1993  
Mixed media  
760 x 750 mm  
Collection of  
NTU Museum

### **Goh Beng Kwan (b.1937, Indonesia)**

Goh, a Cultural Medallion artist (1989), is prominent for his abstract collage works. While embracing his East-Asia heritage he was moulded by his exposure under the tutelage of renowned Singapore pioneer artist Chen Wen Hsi in the 1950s. His collages that are created through a process of layering create varied tones, depth and texture where the incorporation of Chinese artistic principles and traditional calligraphic strokes could be clearly seen.



24  
*Pu Tu Lu –  
Crane's Paradise*  
1997  
Mixed medium collage  
1250 x 1250 mm  
Collection of NIE

### **Tan Khim Ser (b. 1943, Singapore)**

Tan is a well-known local artist and educator who has been championing and promoting art in the Singapore Community. In 1972, he founded the Life Art Society, teaching generations of artists throughout the decades at various grassroots organisations and clubs. Proponent in Chinese Calligraphy and ink painting, trained in both Chinese and Western painting, his work has been included in the private and public collections of museums around the world.



34  
*Orchid*  
Year unknown  
Chinese ink on paper  
760 x 935 mm  
Collection of  
NTU Museum  
Inscription: 香远益清  
戊子年八月秋賜画